

F.A.I.R.

Implement and maintain good data management strategies by using FAIR guidelines

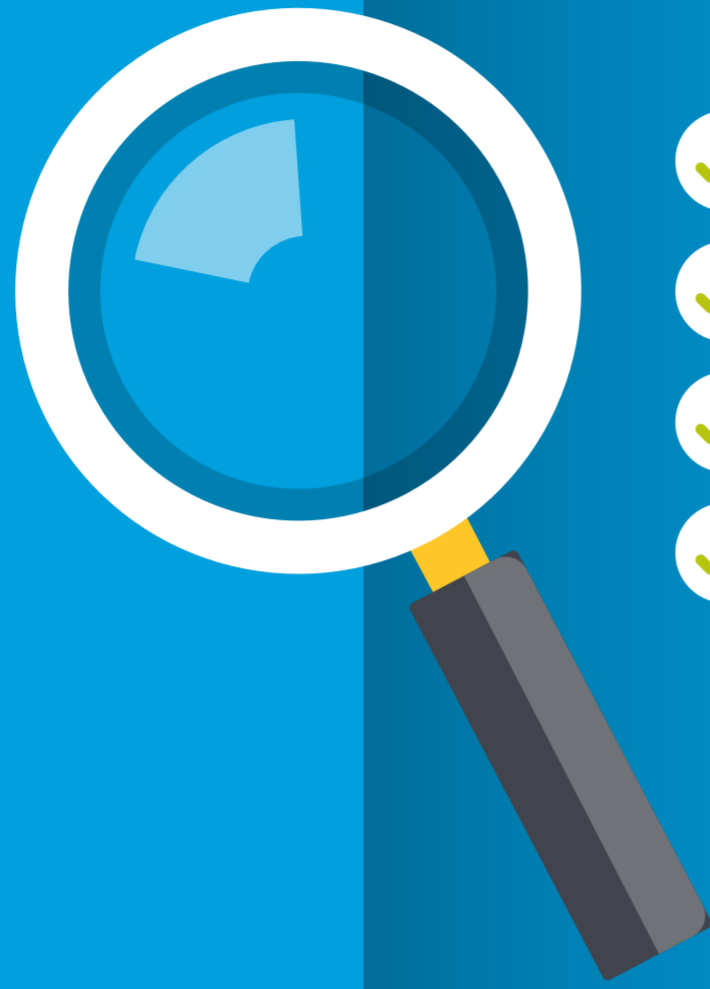


Signals Translational

Enabling the FAIRification of your data

FINDABLE

In order to find data easily it needs to have unique (and persistent) identifiers that are easy to find by both humans and machines



- ✓ Persistent and Unique Identifiers (UIDs)
- ✓ Rich metadata with customizable attributes to mine and access data
- ✓ Data indexed and searchable via a comprehensive UI
- ✓ Perform simple to complex nested searches

ACCESSIBLE

Data should be accessible with relevant authentication layers and role-based user access



- ✓ Standardized communications protocols are used to retrieve data
- ✓ Standard authentication procedure can be integrated with customer's own authentication layer
- ✓ User-specific privileges and can be applied at the study and/or data type level
- ✓ Relevant contingencies in place to ensure uninterrupted, continual data accessibility

INTEROPERABLE

Ensuring interoperability with other platforms as well as across datasets



- ✓ Provide structure to datasets using a configurable and consistent data model
- ✓ Maintain and share 'standard' vocabularies or create 'controlled' vocabularies
- ✓ Use ontologies to further annotate data
- ✓ Public APIs enable integration and interoperability within the client's ecosystem

REUSABLE

Well defined data sets ensure future reusability of data



- ✓ Harmonize new and legacy datasets for cross-study analysis using a common data model
- ✓ Customizable attributes for all entities and measurement types record accurate and relevant metadata
- ✓ Use established data standards like CDISC or proprietary standards to inform your data model
- ✓ Maintain the provenance of the data by adding relevant attributes to the customizable information model